

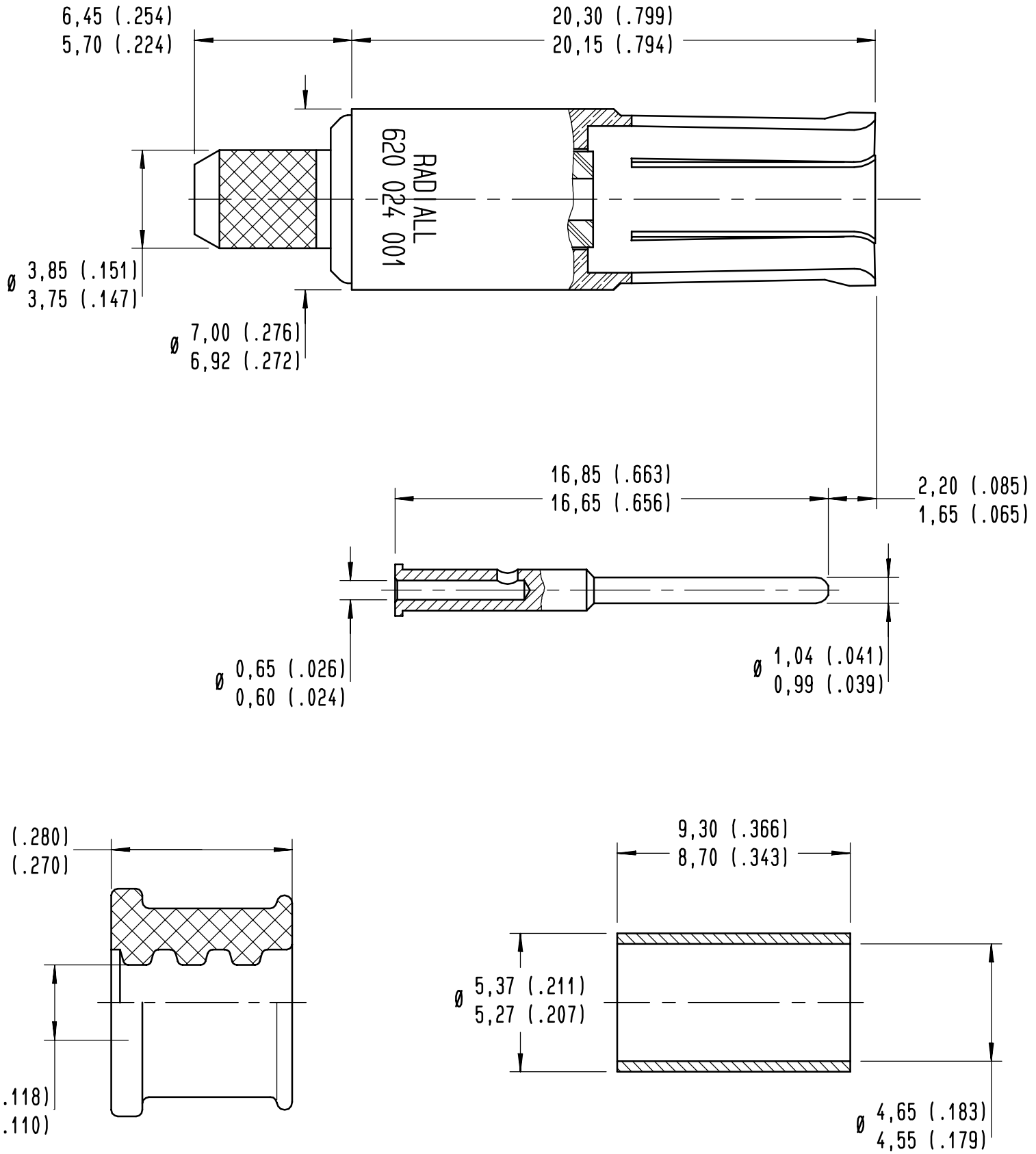


Series  
NSX

SIZE 5 COAXIAL SOCKET CONTACT ENVIRONMENTAL  
FOR RG180 AND RG195 CABLES

Issue:  
23 OCT 98

Page  
1 / 2



This information is given as an indication. In the continual goal to improve our products, we reserve the right to make any modifications judged necessary.

4112-9610

CREATION				
PEN: M980009365A				
NOM: VALGRESY				
DATE: 23 OCT 98				
APPR.: .				
Issue	Revisions	Name	Approved	

A620024001



**MATERIAL:**

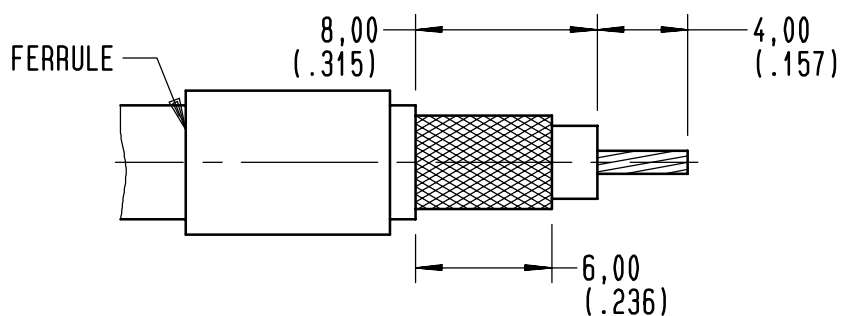
OUTER CONTACT: BERYLLIUM COPPER PER ASTM-B-196  
INSULATOR: PTFE  
CENTER CONTACT AND FERRULE: ANNEAL BRASS  
SEALING BOOT: FLUOROSILICONE ELASTOMER PER MIL-R-25988 OR PER ZZ-R-765

**FINISH (ALL METAL PARTS)**

PLATING 50 MICROINCHES OF GOLD PER MIL-G-45204 TYPE I OR II GRADE C OR D  
CLASS 1 OVER NICKEL PER QQ-N-290

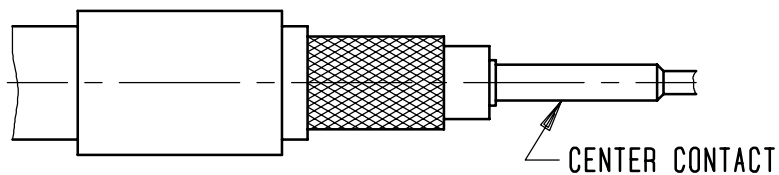
**DESIGN REQUIREMENTS**

TEMPERATURE RANGE: -65° C TO +165° C  
IMPEDANCE: 50 OHMS NOMINAL  
RATED VOLTAGE: 325 V RMS AT SEA LEVEL  
VSWR: 1.10:1 FREQUENCY RANGE : 0 - 300 MHZ  
VSWR: 1.30:1 FREQUENCY RANGE : 300 - 500 MHZ  
FREQUENCY RANGE: 0 - 500 MHZ  
DIELECTRIC WITHSTANDING VOLTAGE: 750 VRMS AT SEA LEVEL

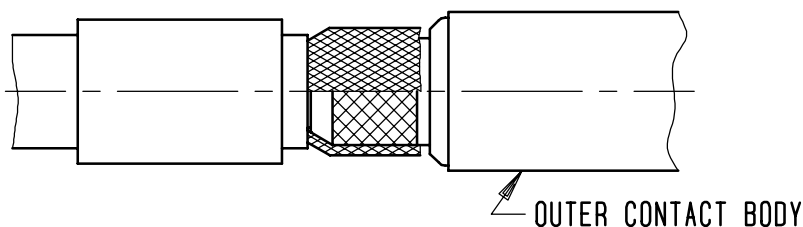


SLIDE THE SEALING BOOT OVER THE CABLE

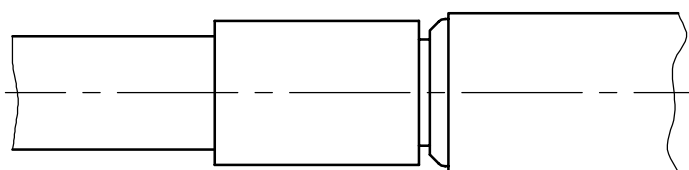
STRIP CABLE TO DIMENSIONS SHOWN ABOVE  
SLIDE FERRULE OVER THE CABLE



SLIDE CENTER CONTACT BARREL OVER CABLE CONDUCTOR  
CONTACT SHOULDER BUTTING AGAINST CABLE DIELECTRIC  
CRIMP CENTER CONTACT  
CRIMPING TOOL M22520/2-01 RADIAL 282281  
SELECTOR ON 6  
POSITIONER: K345 RADIAL 282550



FLARE BRAID, INSERT CENTER CONTACT INTO THE OUTER CONTACT BODY  
PLACE BRAID OVER KNURLED PART OF OUTER CONTACT BODY



SLIDE FERRULE OVER BRAID UNTIL IT BUTTS AGAINST SHOULDER OF OUTER CONTACT BODY  
CRIMP FERRULE  
CRIMPING TOOL: M22520/5-01 RADIAL 282293  
DIE: M22520/5-05 RADIAL 282246 HEX. B 4,5 (.177) /FLATS

EXTRACTION TOOL: M81969/28-01 RADIAL 282946

This information is given as an indication. In the continual goal to improve our products, we reserve the right to make any modifications judged necessary.

4113-9306